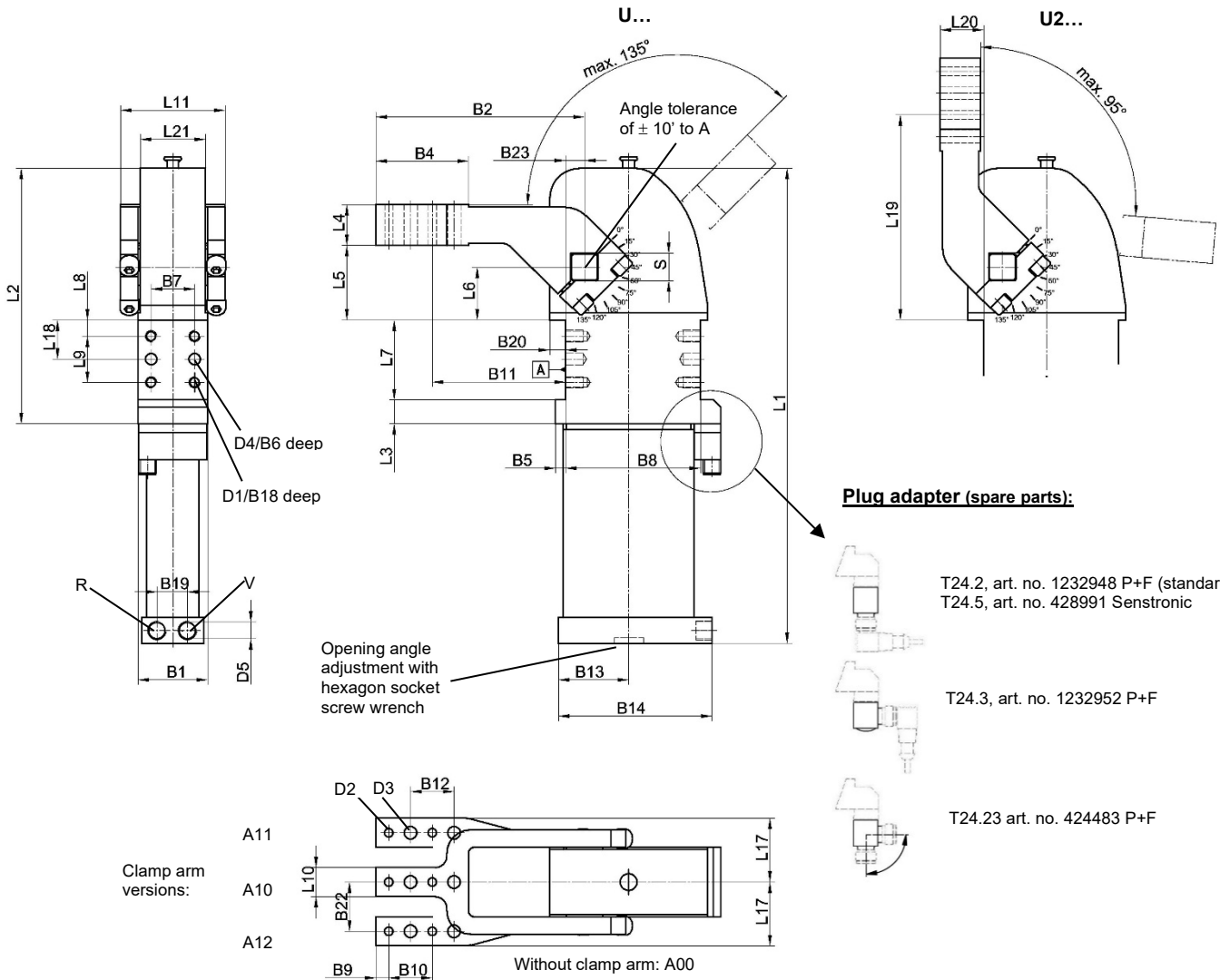


Universal Clamp

Stepless adjustable opening angle, approx. 30% reduced air consumption at unchanged clamping force

U/U2 ... BR5 A10 T24... 5°/10° - 135°



Plug adapter (spare parts):

- T24.2, art. no. 1232948 P+F (standard)
- T24.5, art. no. 428991 Senstronic
- T24.3, art. no. 1232952 P+F
- T24.23 art. no. 424483 P+F

Ordering example:

U 50 BR5 W A10 T24.2

U 50 BR5: Type
 W: Option: coating resistant to welding beads
 A10: Clamp arm version
 T24.2: Sensing system (standard)

Opening angles:

Stepless adjustable in the range of
 5° to 135° (type U 50/63)
 10° to 135° (type U 80)

*Tolerance for dowel holes ± 0.02, for threaded holes ± 0.1.

** Weight as shown: Clamp with clamp arm

Ordering example TÜNKERS sensing systems, two-piece:

- ...T24.1 Without plug adapter
- ...T24.2/5 With straight plug adapter (standard)
- ...T24.3 With plug adapter 90° angle
- ...T24.23 With rotatable plug adapter

Options (see separate data sheets):

- HO: Pneumatic self-holding function
- RB: Detent in the cylinder bottom
- W: Coating resistant to welding beads
- Z: Hand lever

Medium: Air, max.6 bar, operation permitted with oil-free air.

Attention:

External throttle check valves must be provided on assembly. They are not included in the scope of delivery!

Plug adapter for inductive sensor 24 V, with integrated LED's, sensor plug M12x1

For clamps with T12 sensing system, see separate data sheet.

Type	Holding torque max.	Clamping moment at 5 bar	Weight** ~ (kg)	B1	B2	B4	B5	B6	B7*	B8 ±0,1	B9	B10 ±0,02
U/U2 50	800 Nm	160 Nm	3.5	48	144	64	6.5	12	30	93	9	30
U/U2 63	1500 Nm	380 Nm	4.8	48	144	64	6.5	12	30	93	9	30
U/U2 80	2500 Nm	800 Nm	11.6	68	179	64	8	12	50	134	9	30

Type	B11 ±0,1	B12 ±0,2	B13	B14	B18	B19	B20	B22 ±0,1	B23	D1	D2 H7	D3	D4 H7	D5	L1	L2
U/U2 50	92	30	41	82	12	16	10.5	34	13	M8	6	9	8	G 1/8	285.5	166
U/U2 63	92	30	45.5	106	12	21	11	37	13	M8	6	9	8	G 1/4	329	175
U/U2 80	119	30	58	125.5	15	24	20	50.5	21	M10	6	9	8	G 1/4	473	257

Type	L3	L4 ±0,1	L5 ±0,2	L6 ±0,05	L7 +0,1	L8 ±0,1	L9 ±0,1	L10	L11	L17	L18 ±0,05	L19	L20 ±0,2	L21	S h9
U/U2 50	16.5	28	51.5	36.5	55	11	32	20	69	44	27	141.5	30	45	19
U/U2 63	16.5	28	51.5	36.5	55	11	32	20	79	47	27	141.5	30	48	22
U/U2 80	29	35	70	50	80	15	50	25	109	63	40	190	35	65	30