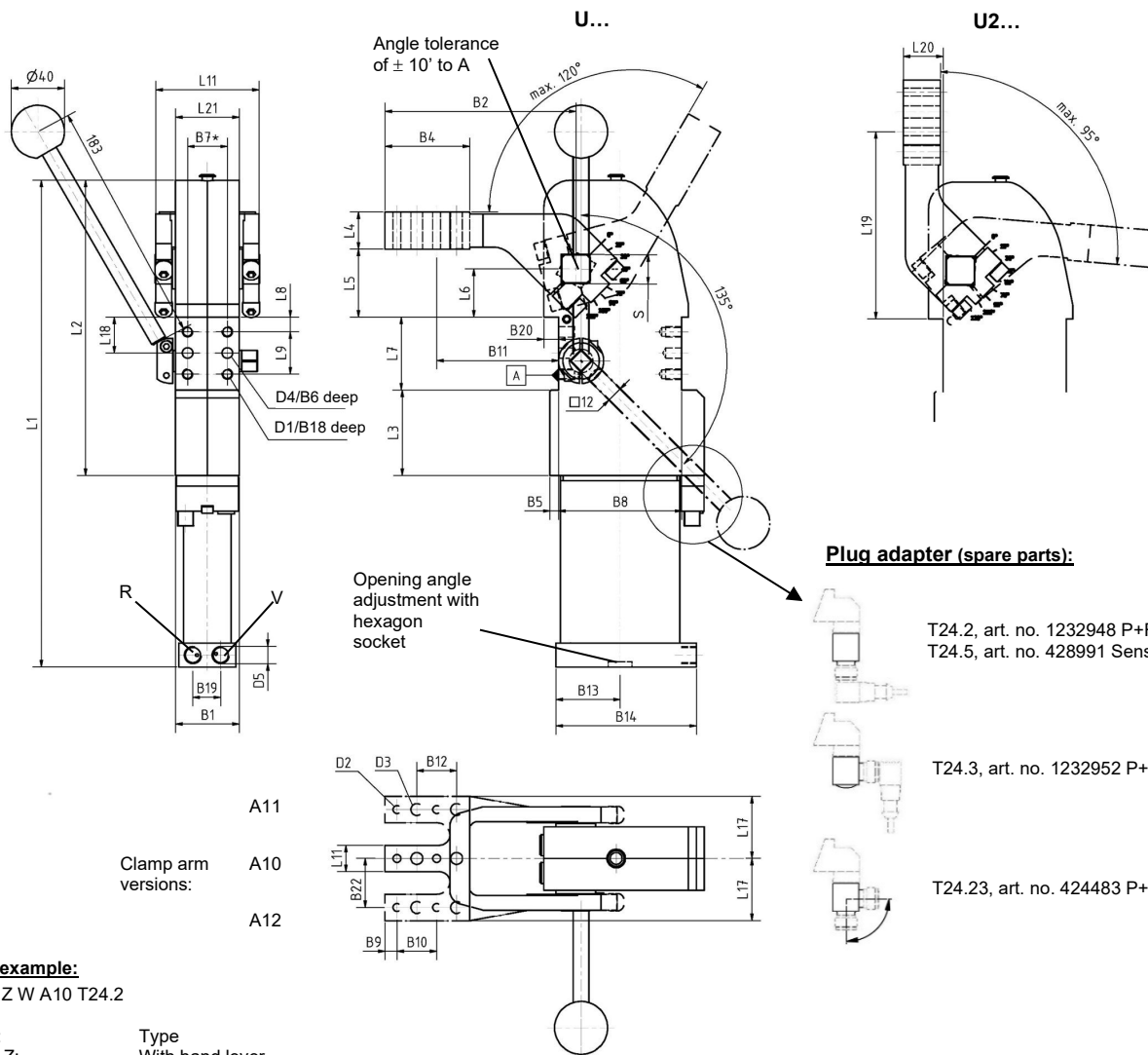


Universal Clamp

Stepless adjustable opening angle, with hand lever, approx. 30% reduced air consumption at unchanged clamping force

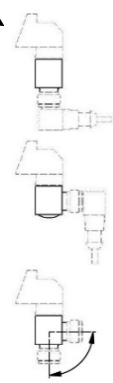
U/U2 50, 63 BR5 Z A10, 5° - 120°



Clamp arm versions:

- A11
- A10
- A12

Plug adapter (spare parts):



- T24.2, art. no. 1232948 P+F (standard)
- T24.5, art. no. 428991 Senstronic
- T24.3, art. no. 1232952 P+F
- T24.23, art. no. 424483 P+F

Ordering example:
U 63 BR5 Z W A10 T24.2

U 63 BR5: Type
Z: With hand lever
W: **Option:** coating resistant to welding beads
A10: Clamp arm version
T24.2: Sensing system (standard)

Ordering example TÜNKERS sensing systems, two-piece:
...T24.1 Without plug adapter
...T24.2/1.5 With straight plug adapter (standard)
...T24.3 With plug adapter 90° angle
...T24.23 With rotatable plug adapter

Plug adapter for inductive sensor 24 V, with integrated LED's, sensor plug M12x1

Ordering code TÜNKERS sensing system, one-piece, optional:
... T12 Inductive sensor, one-piece

Opening angles:
Stepless adjustable in the range of 5° to 120°

Manual force max.: 200 N
Max. hand lever torque at 200 mm hand lever length: 40 Nm

Options (see separate data sheets):
RB: Detent in the cylinder bottom
W: Coating resistant to welding beads

Attention:
External throttle check valves must be provided on assembly. They are not included in the scope of delivery!

A 5/3-way valve is required, central position de-aerated.

The hand lever and adapter are supplied unmounted and can be assembled either left or right. The welding of the hand lever in any position is carried out by the customer.

* Tolerance for dowel holes ± 0.02, for threaded holes ± 0.1.

** Weight as shown: Clamp with clamp arm

Medium: Air, max.6 bar, operation permitted with oil-free air.

Type	Holding torque max.	Clamping moment at 5 bar	Weight** ~ (kg)	B1	B2	B4	B5	B6	B7*	B8 ±0.1	B9	B10 ±0.02
U/U2 50	800 Nm	160 Nm	5.0	48	144	64	6.5	11.5	30	97	9	30
U/U2 63	1500 Nm	380 Nm	6.2	48	144	64	6.5	12	30	93	9	30

Type	B11 ±0.1	B12 ±0.2	B13	B14	B18	B19	B20	B22 ±0.1	D1	D2 H7	D3	D4 H7	D5	L1	L2	L3
U/U2 50	88	30	38	86	12	16	10.5	34	M8	6	9	8	G 1/8	323	210	60.5
U/U2 63	92	30	48.5	106	12	21	11	37	M8	6	9	8	G 1/4	368	223	64.5

Type	L4 ±0.1	L5 ±0.2	L6 ±0.05	L7 ±0.1	L8 ±0.1	L9 ±0.1	L10	L11	L17	L18 ±0.05	L19	L20 ±0.2	L21	S h9
U/U2 50	28	51.5	36.5	55	11	32	20	69	44	27	141.5	26	45	19
U/U2 63	28	51.5	36.5	55	11	32	20	79	47	27	141.5	30	48	22