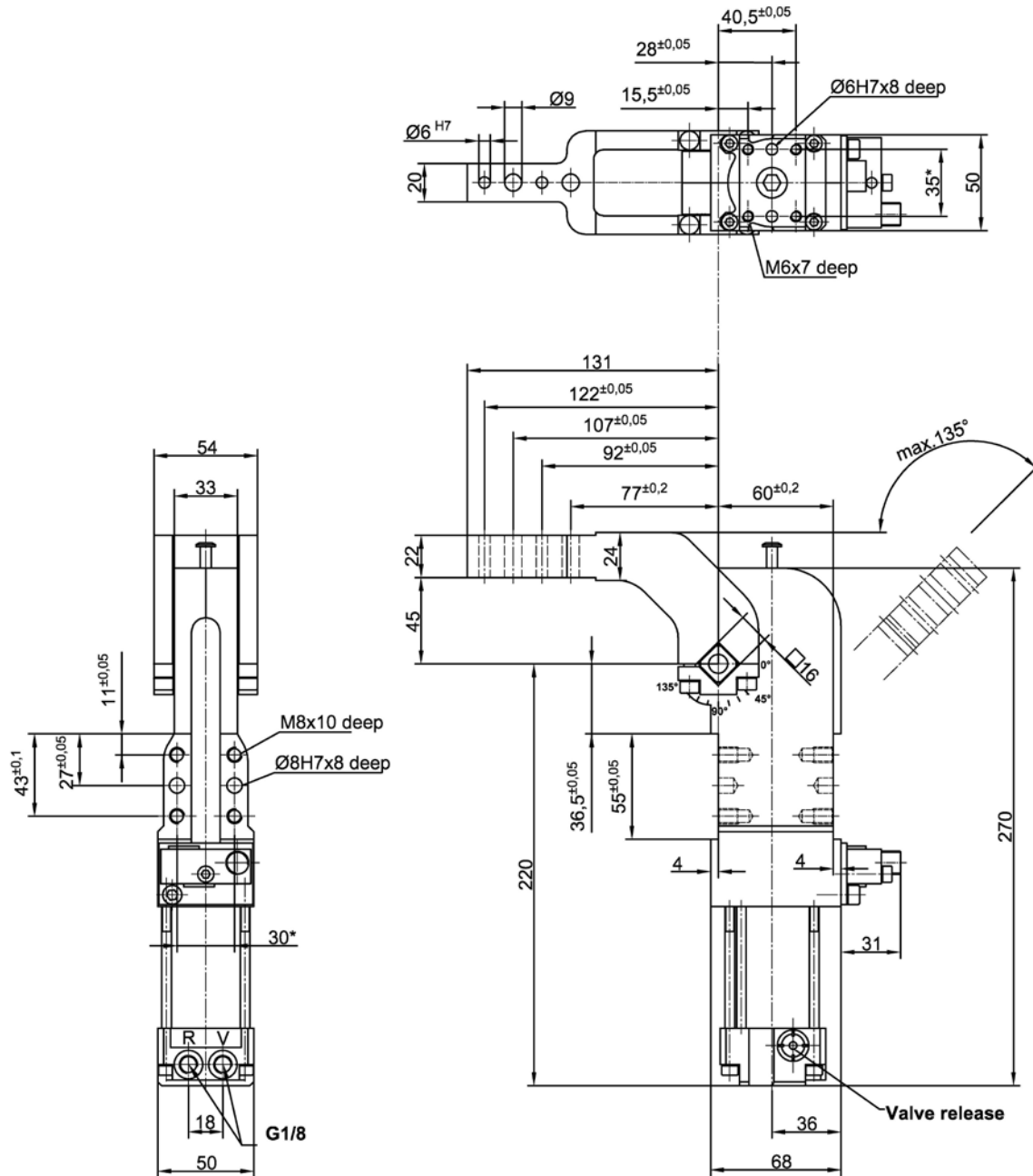


# ALPHA-Clamp

Lightweight design, with power curve and adjusting function, pneumatic self-locking type, connection compatible to size 50/63, stepless adjustable opening angle

## APH 40.5 H BR2 LW A60

### 10° - 135°



#### Ordering example:

APH 40.5 H BR2 LW A60 T12

APH 40.5.....BR2: Type  
 H: Pneumatic self-locking type  
 LW: Lightweight design  
 A60: Clamp arm version  
 T12: Sensing system

#### Ordering example TÜNKERS sensing systems:

... T00 Without sensing  
 ... T12 Inductive sensor 24 V, 1 output with integrated LED's

Type	Holding torque max.	Clamping moment at 5 bar	Corresp. piston Ø (mm)	Weight ~ (kg)
APH 40.5 H BR2 LW	120 Nm	120 Nm	40	1.8