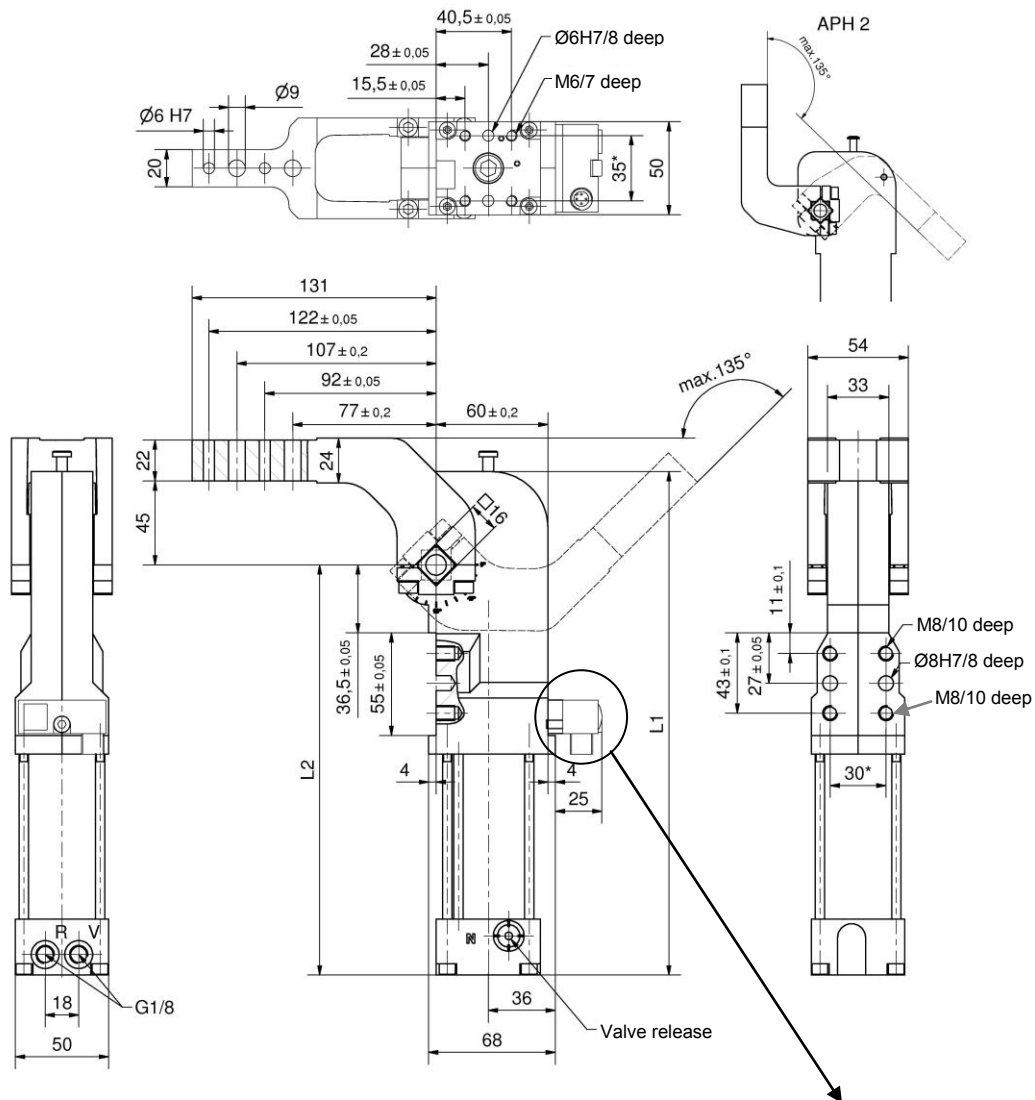


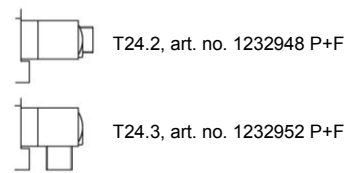
ALPHA-Clamp

Lightweight design, with power curve and adjusting function, pneumatic self-locking type, connection compatible to size 50/63, stepless adjustable opening angle

APH 40.5 H BR5 LW A60



Plug adapter (spare parts):



Ordering example:

APH 40.5 H BR5 LW A60 T24.2

APH... BR5: Type
40.5: Corresp. piston Ø
H: Pneumatic self-locking type
LW: Lightweight design
A60: Clamp arm version
T24.2: Sensing system

Attention:

External throttle check valves must be provided on assembly. They are not included in the scope of delivery!

Constant clamping moment in the angle range of 0 to - 3°.

*Tolerance for dowel holes ± 0.02, for threaded holes ± 0.1.

**as shown

Medium: Air, max. 6 bar, operation permitted with oil-free air.

Ordering example Tünkers sensing systems, two-piece:

...T24.1 Without plug adapter
...T24.2 With straight plug adapter (standard)
...T24.3 With plug adapter 90° angle

Type	Holding torque max.	Clamping moment at 5 bar	Corresp. piston Ø (mm)	Weight** ~ (kg)	L1	L2
APH 40.5 H BR5 LW	380 Nm	120 Nm	40	1.8	270	220